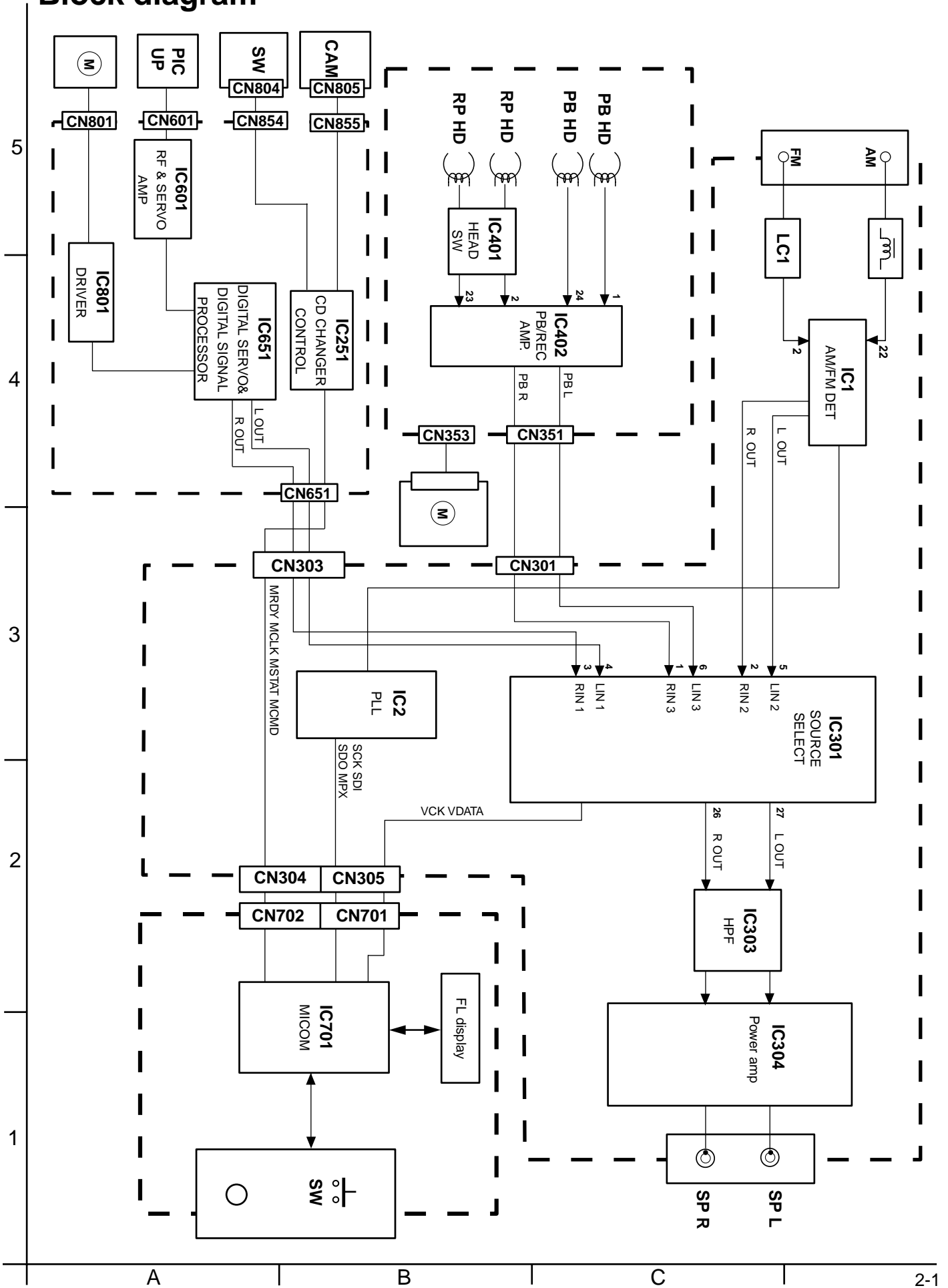


# Block diagram

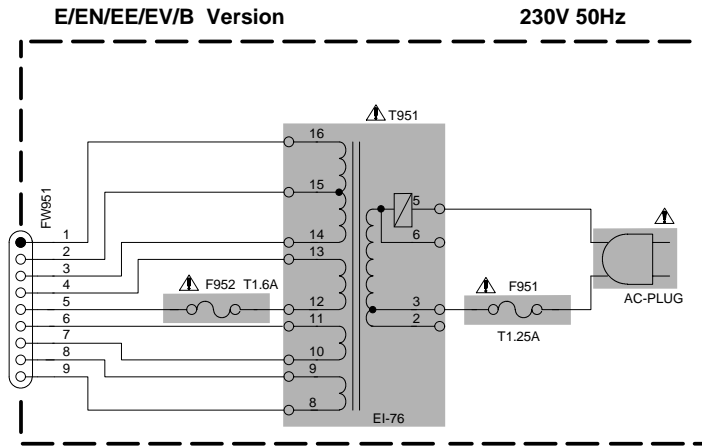


# Standard schematic diagrams

5

## ■ Power Transformer section

4



3

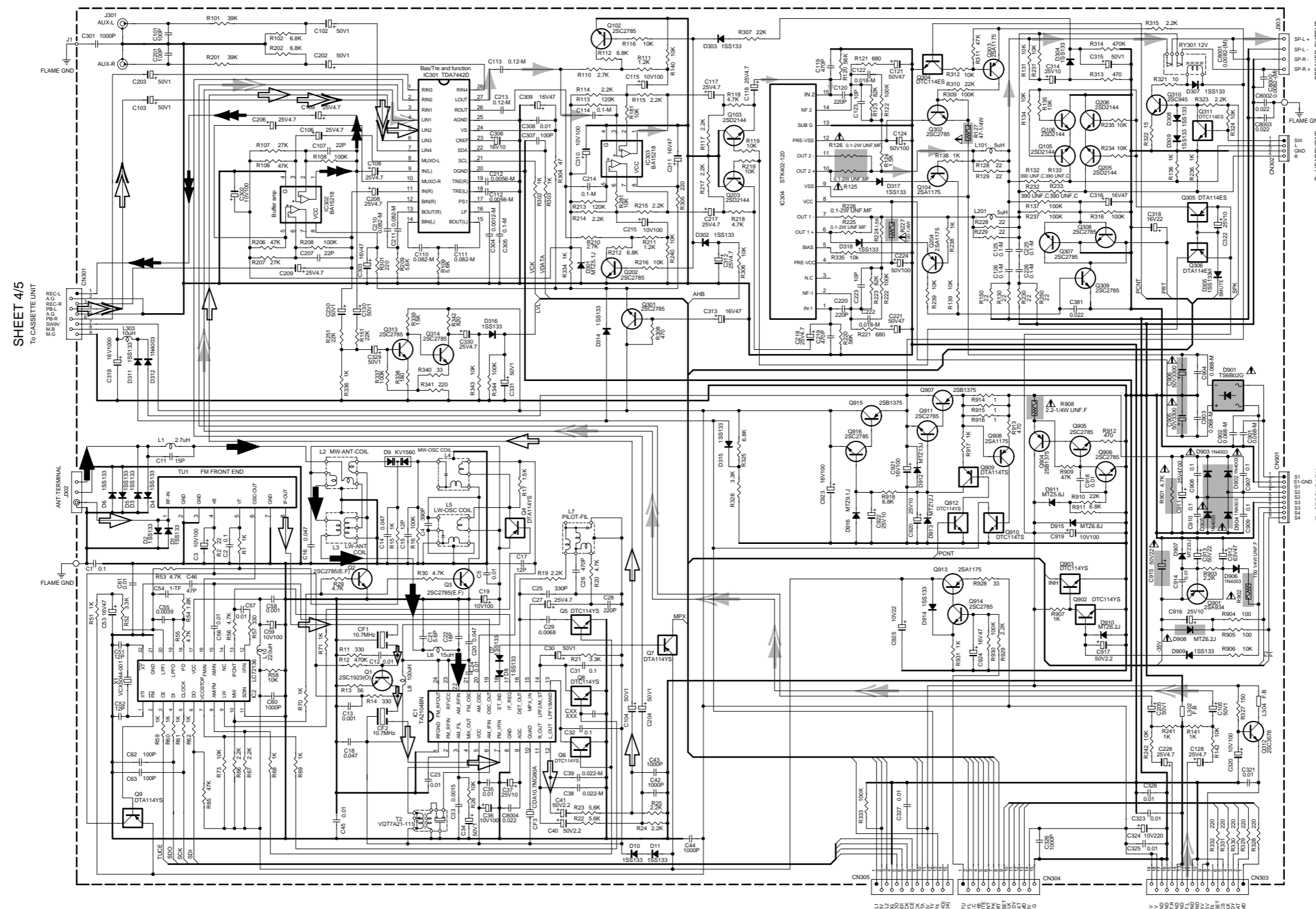
■ ⚠ Parts are safety assurance parts.  
When replacing those parts make sure to use the specified.

2

1

Main section

5  
4  
3  
2  
1



SHEET 4/5  
To CASSETTE UNIT

ANTERMINAL  
J302

FLAME GND

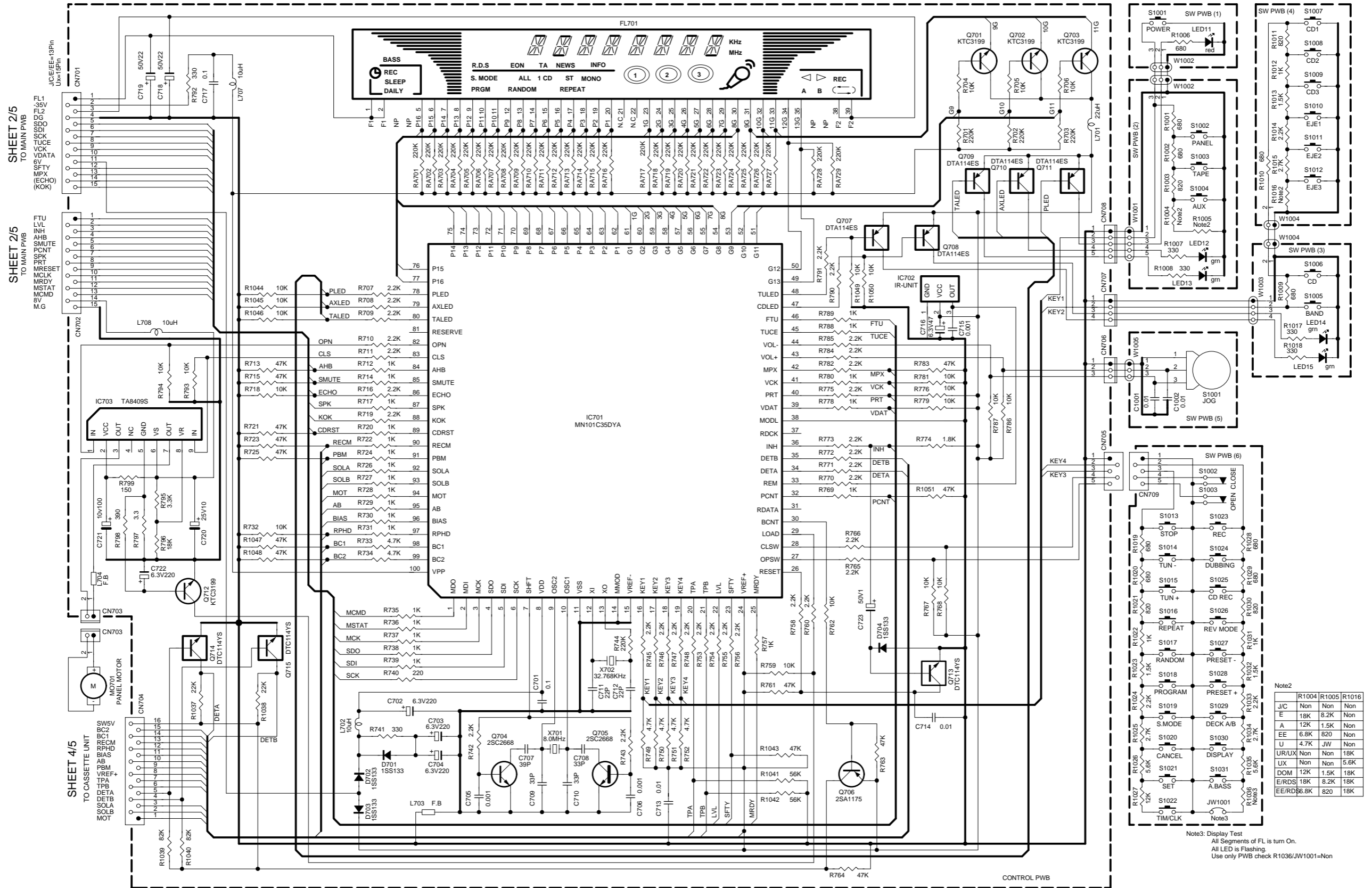
To CTRL P C BOARD SHEET 3/5  
To CTRL P C BOARD SHEET 3/5  
To CD UNIT SHEET 5/5

- ➔ MAIN signal
- ➔ TAPE P.B. signal
- ➔ AM signal
- ➔ FM / TUNER signal
- ➔ CD signal
- ➔ RECORDING signal

⚠ Parts are safety assurance parts.  
When replacing those parts make  
sure to use the specified.

Control section

5  
4  
3  
2  
1



Note2

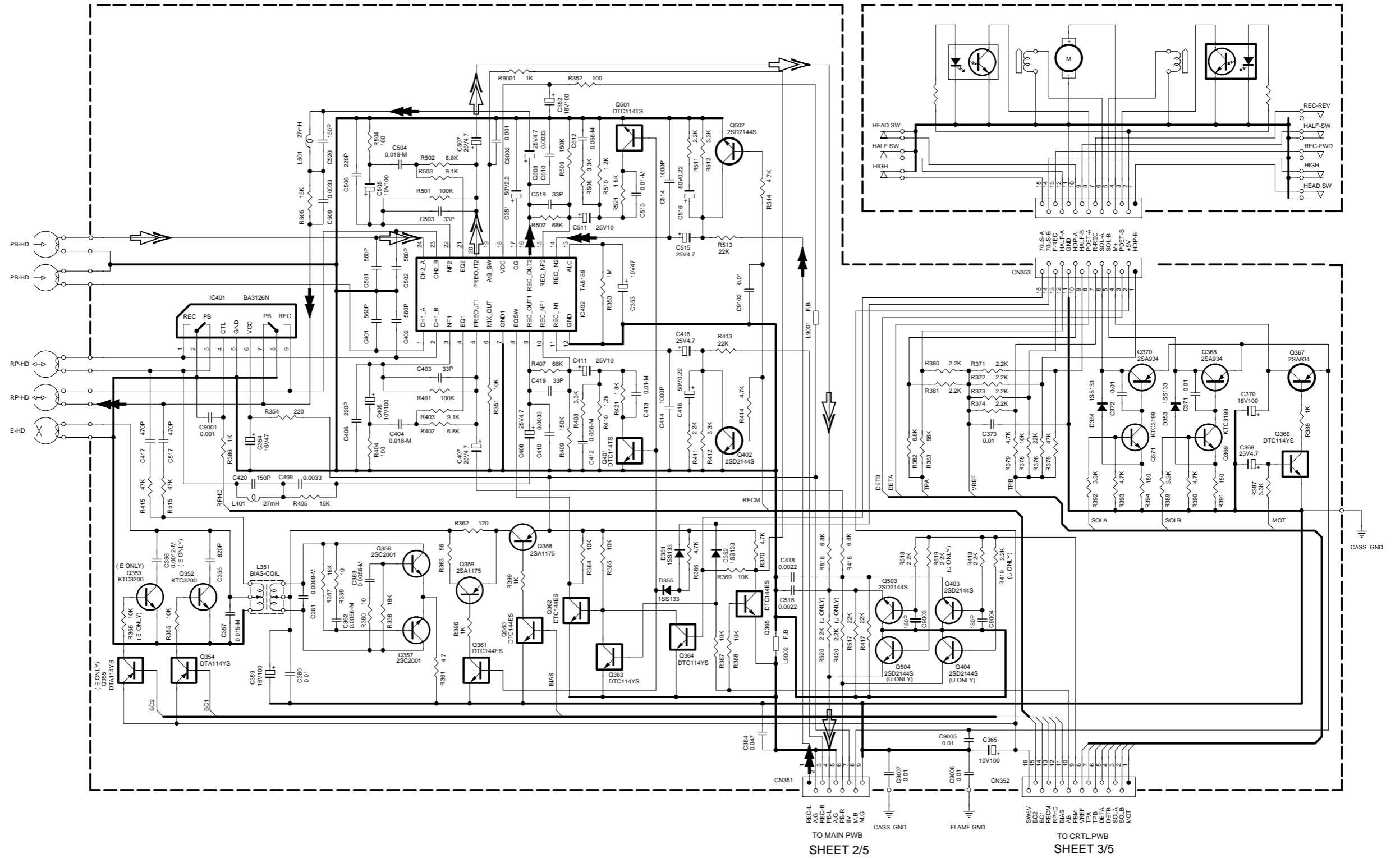
	R1004	R1005	R1016
JIC	Non	Non	Non
F	18K	8.2K	Non
A	12K	1.5K	Non
EE	6.8K	820	Non
U	4.7K	JW	Non
UR/UX	Non	Non	18K
UX	Non	Non	5.6K
DOM	12K	1.5K	18K
E/RDS	18K	8.2K	18K
EE/RDS	5.6K	820	18K

Note3: Display Test  
 All Segments of FL is turn On.  
 All LED is Flashing.  
 Use only PWB check R1036/JW1001=Non

A B C D E F G H

■ Tape section

5  
4  
3  
2  
1



\*\* : C356,R356,Q353,Q355 FOR E VERSION ONLY.  
 \*\* : R419 & R519 ,R420 & R520 ,Q404 & Q504 FOR U VERSION ONLY.

⇨ TAPE P.B. signal  
 ⇨ RECORDING signal

A B C D E F G 2-5

CD Servo & CD Mechanism control selection

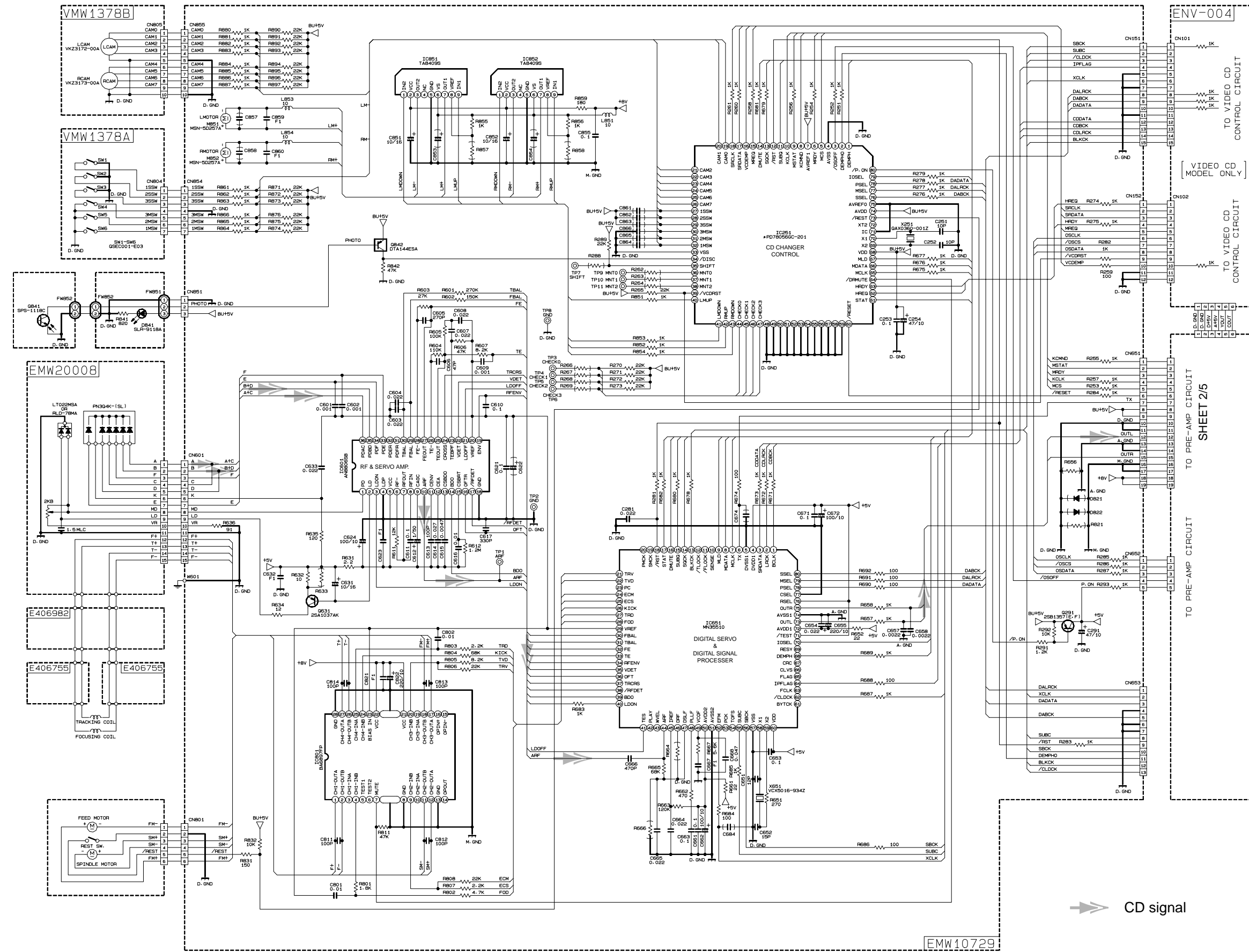
5

4

3

2

1



# Printed circuit boards

## ■ Main board

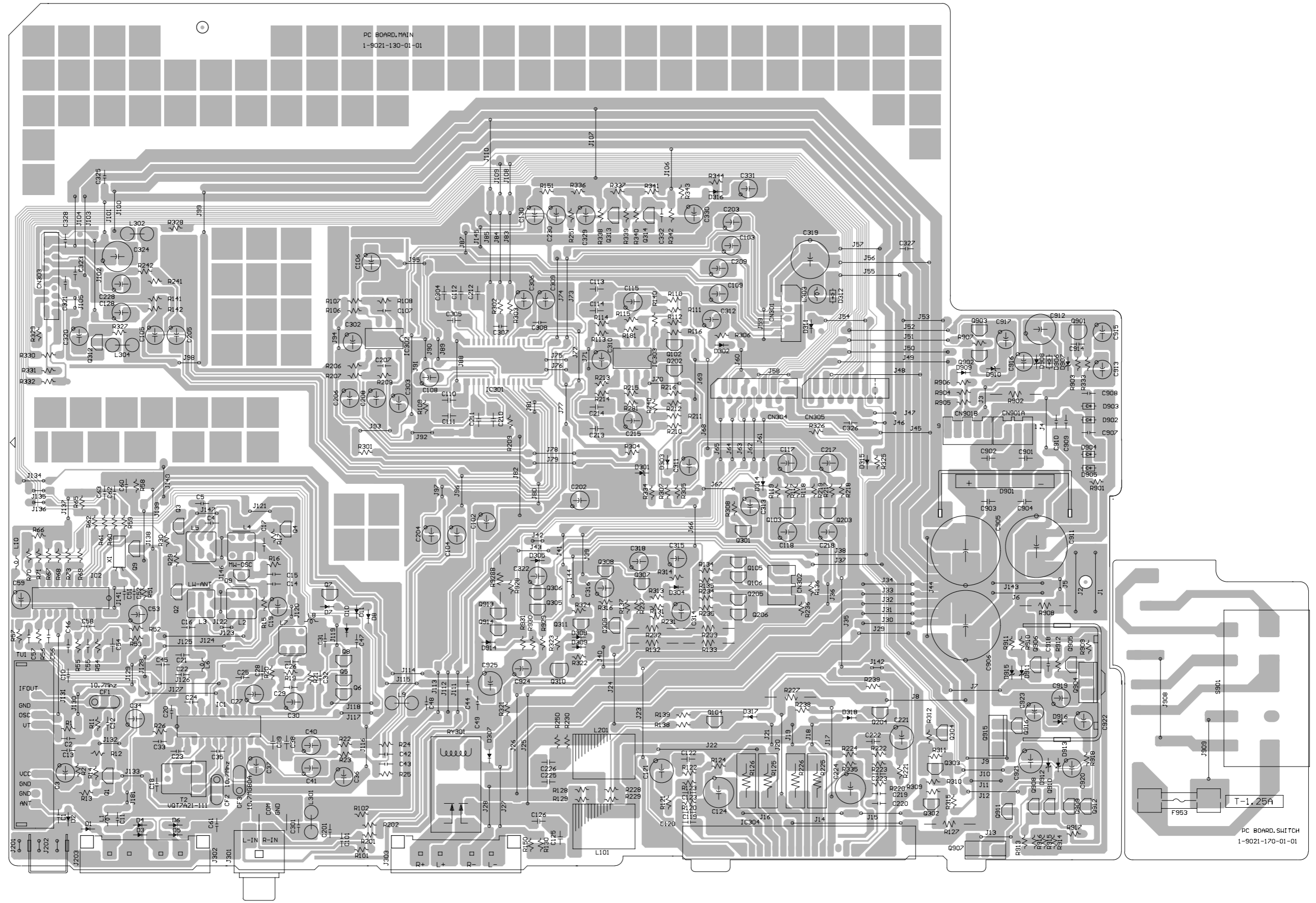
5

4

3

2

1



A

B

C

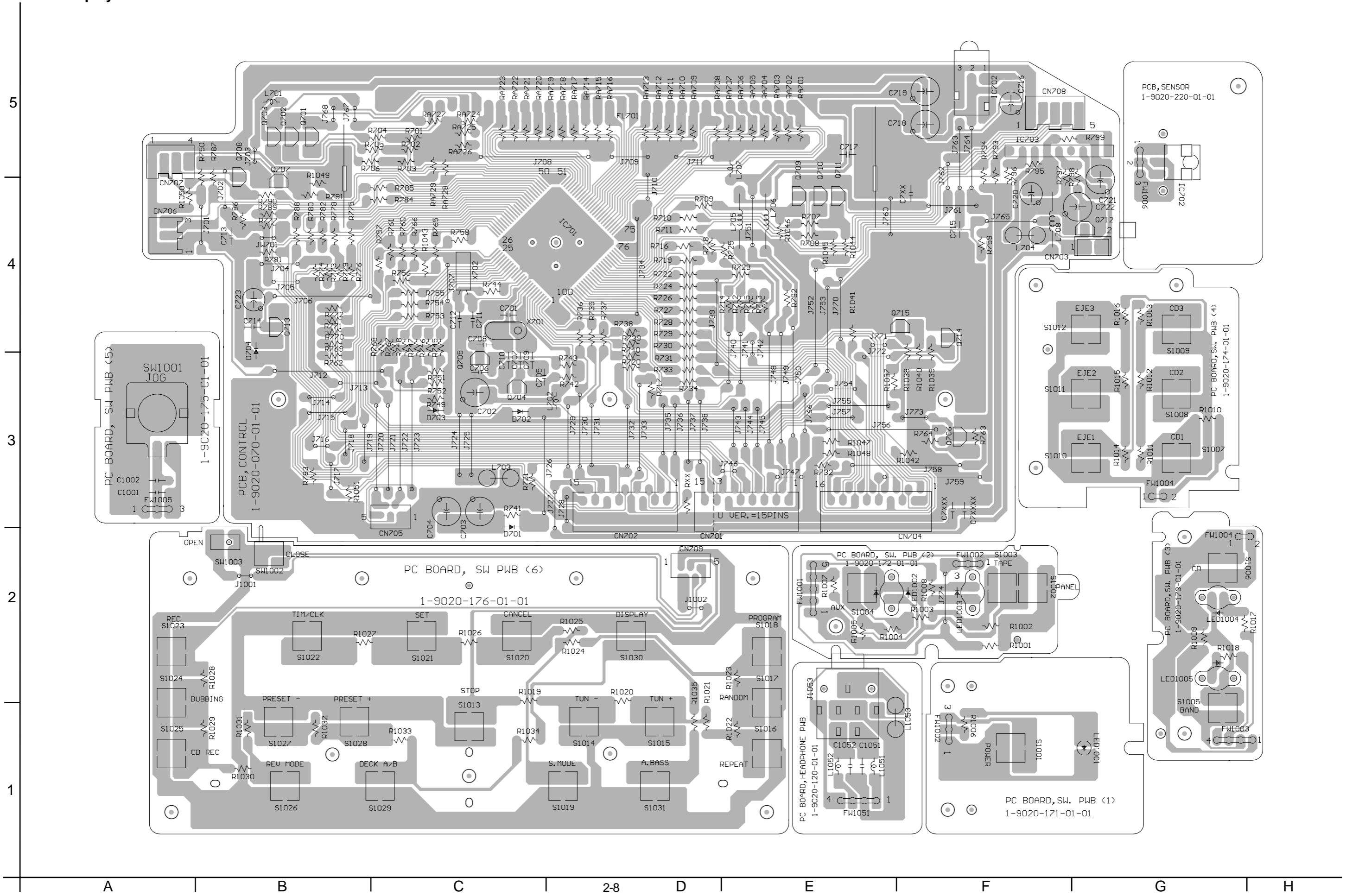
D

E

F

G

■ Display and multicontrol board



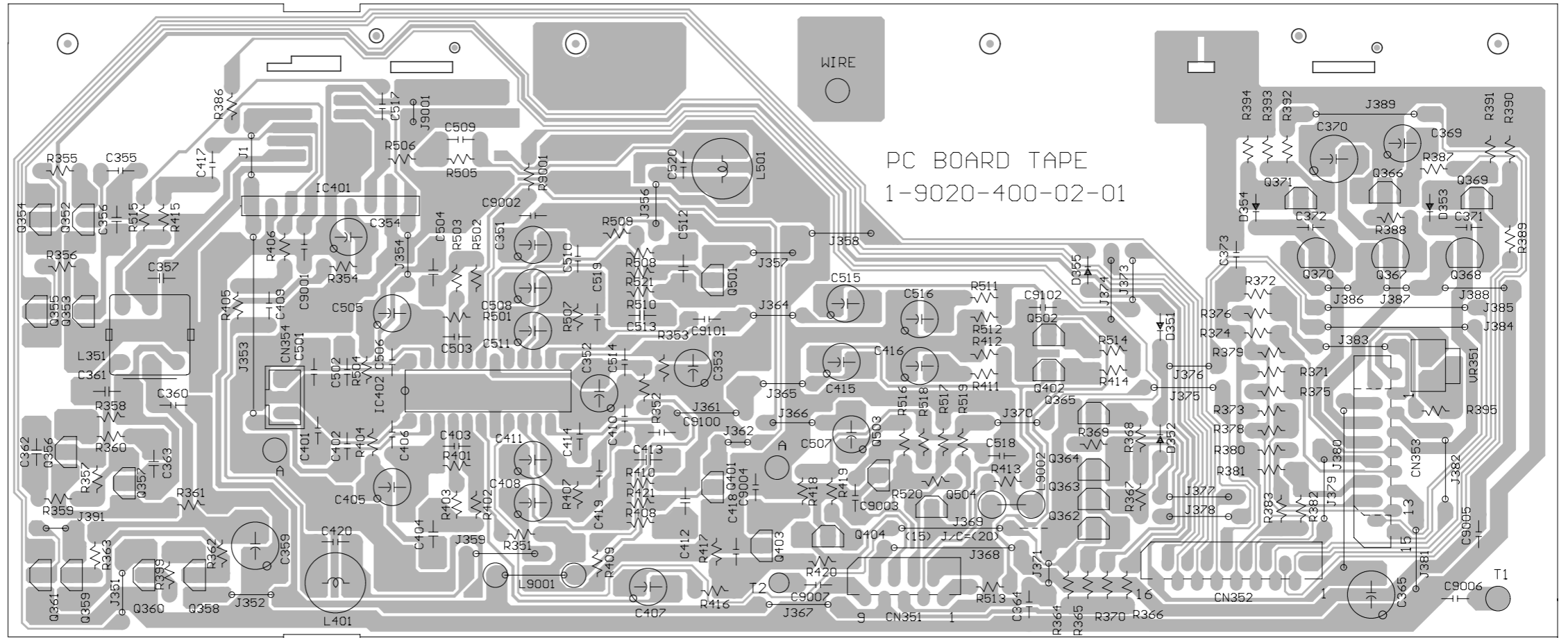


■ Cassette amplifier board

5  
4  
3  
2  
1

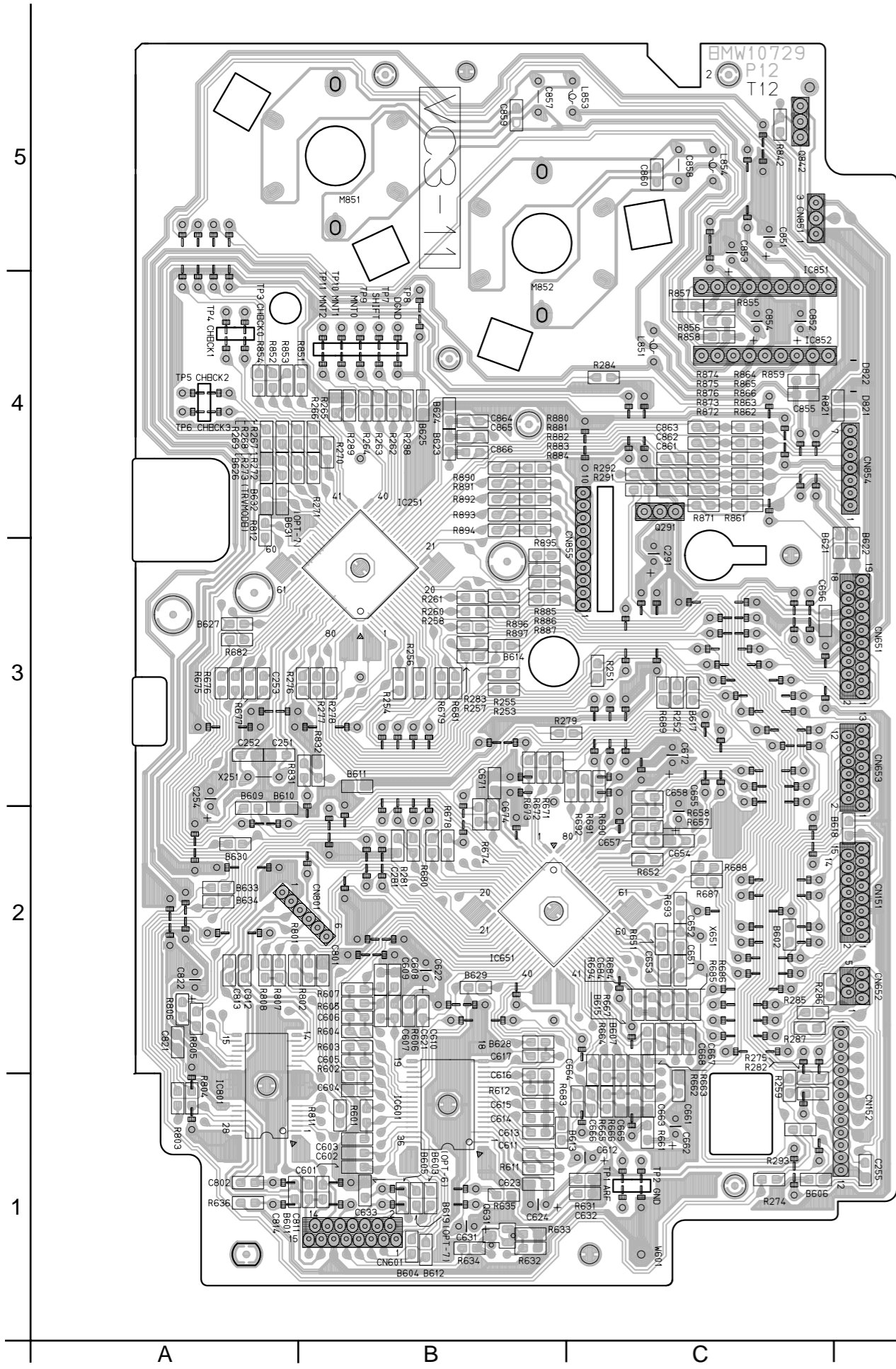
J/C	U	E
D351, 352	1SS133	1SS133
D355	1SS133	1SS133
Q363, 364	DTC114YS	DTC114YS
Q361, 362	DTC144ES	DTC144ES
Q404, 504	2SD2144S	-
R364, 365	10K	10K
R367, 369	10K	10K
C364	0.001	0.047

J/C	U	E
R421, 521	3.3K	3.3K
R366	4.7K	4.7K
R363	56	56
R407, 507	82K	68K
Q353	KTC3200	-
Q355	DTC114YS	-
Q359	2SA1175	2SA1175
Q401, 501	DTC114TS	DTC114TS

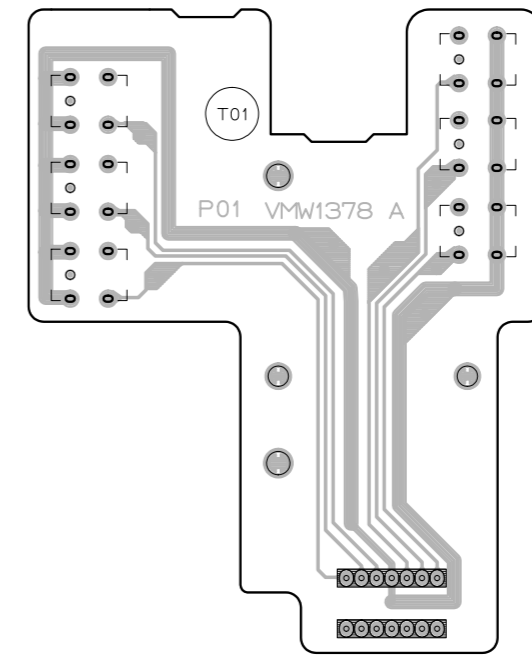


A B C D E F G 2-9

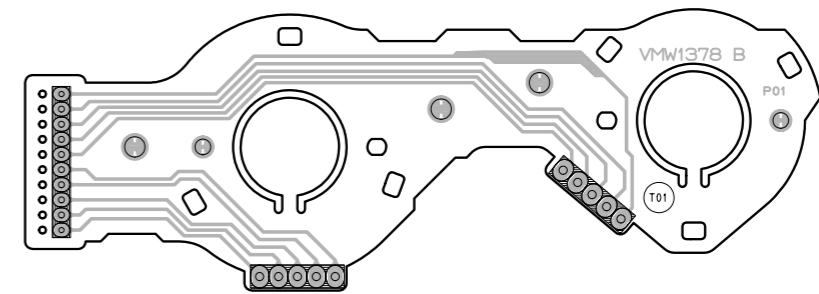
■ CD servo control board



■ CD Tray section switch board



■ Cam switch board



■ Power transformer board

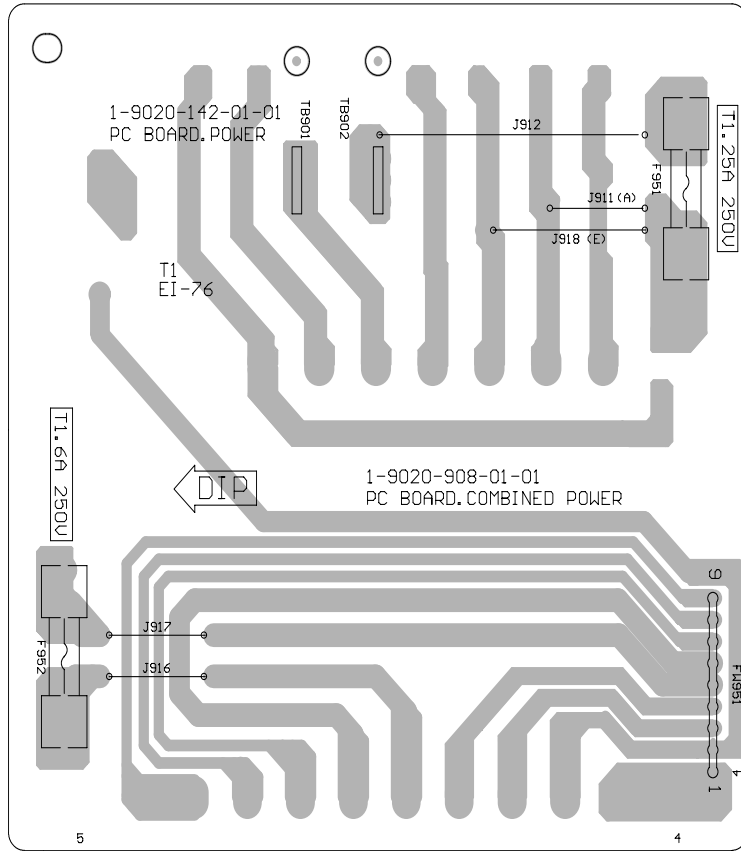
5

4

3

2

1



**-MEMO-**